



**Tough printers for tough tasks  
Bar Code Printing Systems**

Checkpoint offers a full line of high-powered, rugged and reliable thermal and laser printers to ensure that your specific needs are met. For medium-volume tasks, select from our thermal printer line. For high-volume requirements including full-color products, we offer high-performance laser printers.

**On-Demand Thermal Printing Systems**

- High-speed processing of tags, labels and forms
- Handle up to 6-inch document widths
- High-quality output of bar codes, text, logos and graphics
- Ability to print on Radio Frequency Electronic Article Surveillance (RF-EAS) integrated tags
- Networkable to multiple computers
- Printers can accommodate modular options
- New EASyPrinter™ Package includes RF-EAS labels and label design software, allowing you to design and print your own RF-EAS security labels
- Desktop units are perfect for lower-volume, high-quality output

**Batch Printing Laser Systems**

- Designed for maximum performance with extremely high-volume jobs
- Print on a wide variety of tags, labels and forms
- A range of printers handles up to 18-inch document widths and up to 60 pages per minute
- High-quality output of bar codes, text, logos and graphics
- Ability to print on RF-EAS integrated tags
- Variable print resolution up to 600 dpi
- Networkable to multiple computers

**Printer/Applicators**

- Print and apply labels in on-line applications
- Rugged components with industry-standard parts
- Easy to maintain, repair and upgrade
- Automatically apply Checkpoint and Sensormatic EAS labels

**Cutter/Stacker**

- High-performance option for wide-web batch laser printers
- Formats labels and tags into convenient, ready-to-use documents



**Custom Document Solutions**

Checkpoint offers a broad range of innovative, customized tags, labels and forms for use across all industries. These professionally designed and produced documents can meet your auto i.d. needs in a wide variety of applications.

**Store-Level Applications**

**Uni-F.I.T.™ RF-EAS Integrated Tags**

- Single tag for branding, tracking and securing products
- Provide instant floor-ready secured merchandise
- Eliminate labor costs associated with application and removal of hard tags
- Reduce material costs and tag clutter

**Full-color Hang Tags**

- With or without RF-EAS integration

**Kim-Kleen™ Dry Release Tags**

- Ideal application for phone card or customer loyalty card (back of the tag remains clean and dry when tag is removed from backing)

**Pricing/UPC Labels**

**Shelf Labels**

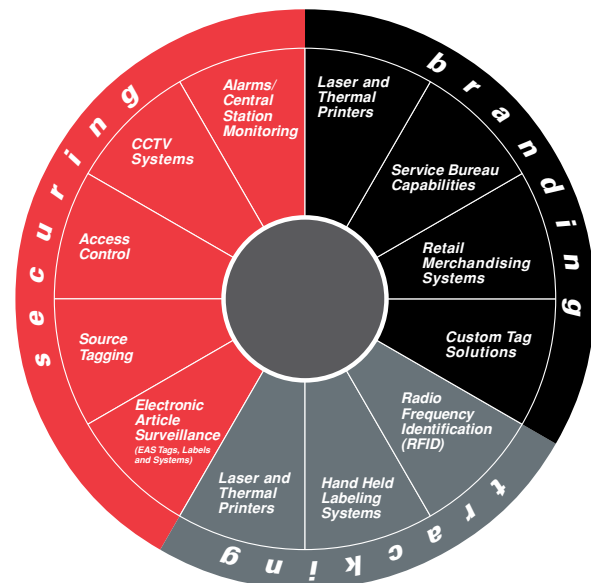
**Supply Chain Applications**

**MetoBond™ Consumer Return Forms**

- Unique document solution for direct-to-consumer businesses
- Enhance customer service by providing an easy way for consumers to return merchandise
- All-in-1 Form includes a merchandise return section and self-contained return shipping labels

**Freight Consolidation Labels**

**Merchandise Tracking Labels**



In addition to Auto I.D./Bar Code solutions, Checkpoint's comprehensive range of offerings includes:

- EAS source tagging
- RFID technology
- Electronic Article Surveillance (EAS) systems for retail stores and libraries
- Access control and asset management systems
- Fire/intrusion alarms
- Central station monitoring
- Retail merchandising systems
- Hand-held labeling equipment

This wide selection of products enables Checkpoint to custom design an integrated solution to meet specific needs for branding, tracking and securing inventory, property, personnel and other assets.

**One source for loss prevention and labeling services worldwide.**

Established in 1969, Checkpoint Systems, Inc. is a multinational manufacturer and marketer of loss prevention and labeling products and services.

Checkpoint's diversified product line helps customers identify, track and secure assets throughout the supply chain, resulting in streamlined operations and increased profits.



Checkpoint utilizes the latest printing technologies and processes to produce the highest-quality custom documents. Whether it's offset, flexo, or for a laser or thermal printer, we can provide any printing solution to meet your needs.



Our solutions include vibrant, full-color tags and labels to identify and track your products. Choose from a huge selection of tag materials and finishing options. And, we'll help you design a tag that will complement your brand image at the lowest possible price.

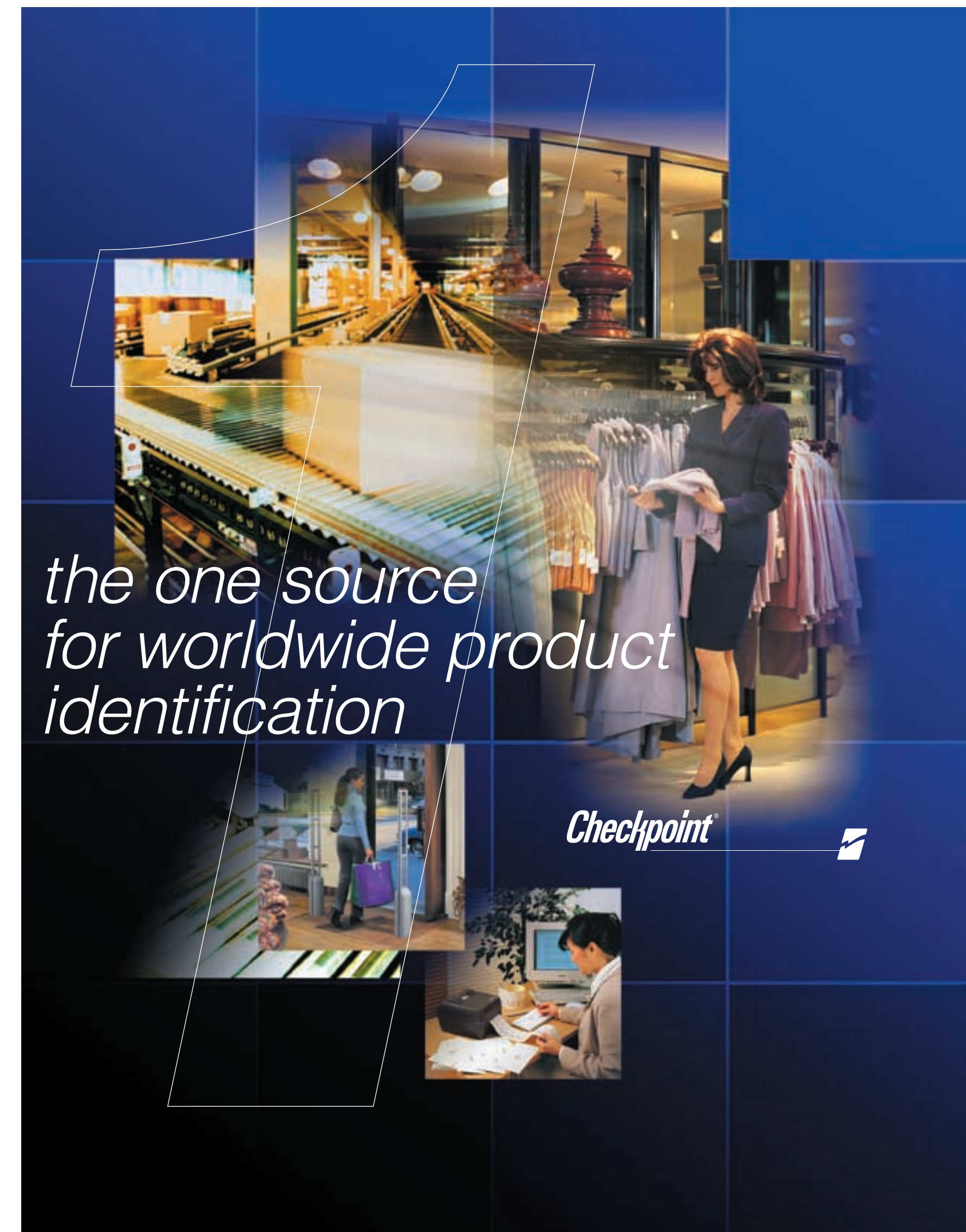


Our paper-thin RF labels can be embedded seamlessly into your custom tags for superior product security. And these RF-integrated tags work hand-in-hand with our wide range of RF-EAS hardware solutions to deter theft and protect your inventory against loss.

Checkpoint Systems, Inc.  
101 Wolf Drive, P.O. Box 188  
Thorofare, NJ 08086  
800 257 5540 Toll Free  
856 848 1800 Phone  
856 848 0937 Fax  
www.checkpointsystems.com



One source for branding, tracking, and securing



the one source  
for worldwide product  
identification

Checkpoint





**A complete range of bar code printing systems and custom document solutions.**

Today's fast-paced business environment demands that you identify and track your products throughout the entire supply chain. You need fast, high-quality document solutions. You need the right products to produce them. And you need a service bureau network to provide printing solutions close to your points of manufacture — anywhere in the world — allowing timely completion and shipment of your finished documents.

Checkpoint Meto offers a complete range of auto i.d./bar code products and services. High-powered thermal and laser printers. All types of custom documents. And a worldwide service bureau network that can accommodate your high volume needs. We're the one source for global product identification solutions.

**World-class quality — anywhere in the world**

**Service Bureau Network**  
 Checkpoint's global network of 22 printing locations allows you to satisfy your high-volume printing needs anywhere in the world. Our service bureaus are located close to your points of manufacture, enabling speedy completion and delivery of custom print applications.

- Web-enabled: orders can be placed and status verified online
- Conveniently located to speed order completion and delivery, minimize shipping costs, and facilitate on-site inspection/proofing of documents

**Service and Support**  
 Checkpoint also provides comprehensive customer service on a global basis. With over 1,700 sales-and-service personnel worldwide, we can provide timely and efficient assistance to installed locations — across town or around the world. We offer several levels of support to ensure maximum performance from your system:

- Complete system installation
- Staff training on system usage
- System maintenance and repair

**Global Service Network:**

Bangladesh	Pakistan
Belgium	Spain
Brazil	Sri Lanka
China	Sweden
France	Switzerland
Holland	Taiwan
Hong Kong	Thailand
India	Turkey
Indonesia	United Kingdom
Italy	United States
Malaysia	Vietnam

The diagram illustrates the flow of goods and information: Manufacturer/Vendor → Goods Shipped, Ready For Sale → Retailer/Distributor → Electronic Order → Service Bureau Control Center → Electronic Communication → Printing Facilities Anywhere In The World → Imprint Variable Data → Ticket Ready For Use → Local Transport → back to Manufacturer/Vendor.